



# Unsurpassed extraction technology accelerated solvent extraction

Thermo Scientific Dionex ASE 150 and 350 Systems





# Sample extraction with walk-away capability to produce uncompromised results

The Thermo Scientific™ Dionex™ ASE™ 150/350 Accelerated Solvent Extractor systems are for laboratories seeking to spend minimal time and effort to extract samples for chromatographic analysis.

## Increase laboratory productivity and sample throughput

The Dionex ASE 150/350 systems improve productivity by using a combination of elevated temperature and pressure to increase the efficiency of the extraction process. The result is faster extraction times with a significant reduction in solvent use when compared to traditional extraction techniques such as Soxhlet or sonication. Other extraction techniques can take up to 48 hours per sample while the Dionex ASE 150/350 system extractions are typically performed in 12–20 minutes. Solvent consumption is reduced by 50–90% when compared with traditional extraction techniques.

Time Savings	
Technique	Average Extraction Times*
Soxhlet	4–48 h
Automated Soxhlet	1–4 h
Sonication	0.5–1 h
SFE	0.5–2 h
Microwave	0.5–1 h
Dionex ASE 150/350	0.2–0.3 h

The Dionex ASE 150/350 systems have proven to yield fast, unattended operation that significantly improves laboratory productivity.

Solvent Savings	
Technique	Solvent Usage*
Soxhlet	150–500 mL
Automated Soxhlet	50–100 mL
Sonication	150–200 mL
SFE	5–50 mL
Microwave	25–50 mL
Dionex ASE 150/350	5–200 mL

\*Calculated on a per sample basis

Why compromise analytical results with cumbersome and ineffective sample extraction techniques?

# Innovative sample preparation solutions to optimize the laboratory workflow

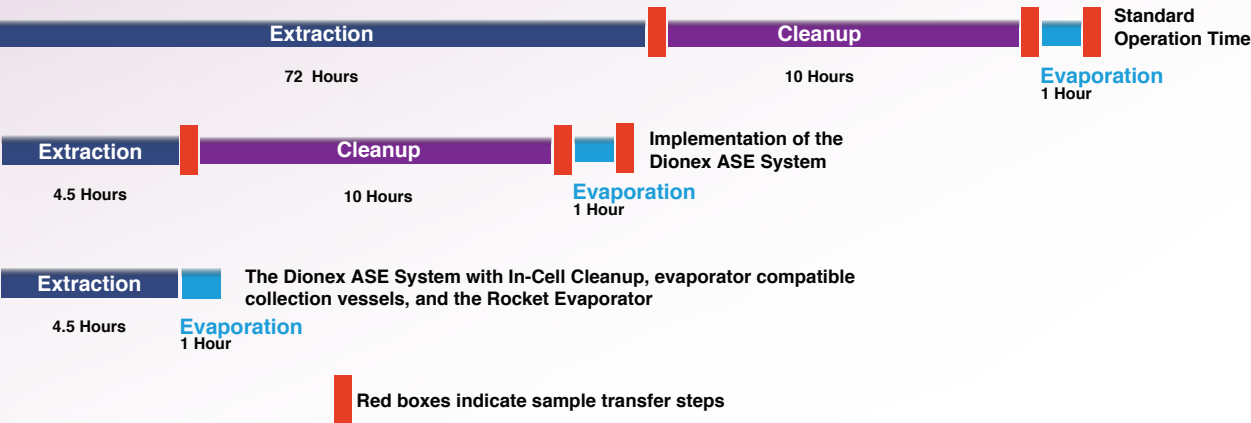
Sample preparation is the most vital part of the laboratory workflow. Since greater than 60% of all errors occur during this phase, it is often considered the most frustrating and cumbersome component of the workflow. While analytical technology has evolved remarkably over the last 20 years, most sample preparation still relies on antiquated manual techniques that can produce low analyte recovery with highly variable reproducibility.

A traditional sample preparation workflow consists of extraction, cleanup, and evaporation, all of which use manual sample transfer steps through the transition. Techniques such as Soxhlet, gel permeation chromatography, and nitrogen blowdown evaporation often produce total sample prep workflow times in excess of 60 hours per batch.

In 1995, the Dionex ASE 200 was introduced and substantially reduced extraction time. More recently, we introduced the Dionex ASE system with In-Cell Cleanup and Thermo Scientific™ Rocket™ Evaporator to address the entire sample preparation workflow and reduce the total time to six hours per sample batch.

The combination of the Dionex ASE system with In-Cell Cleanup and the Rocket Evaporator provides a total sample preparation solution for the analytical laboratory. The combination of these two techniques eliminates both the manual cleanup step and manual sample transfer resulting in highly accurate and reproducible sample preparation.

## Sample Preparation Productivity \*



\*average processing times for 18 samples



Dionex ASE 350 System



Rocket Synergy 2 Evaporator



Thermo Scientific™ TRACE™ 1300 Series GC



## Inside the system

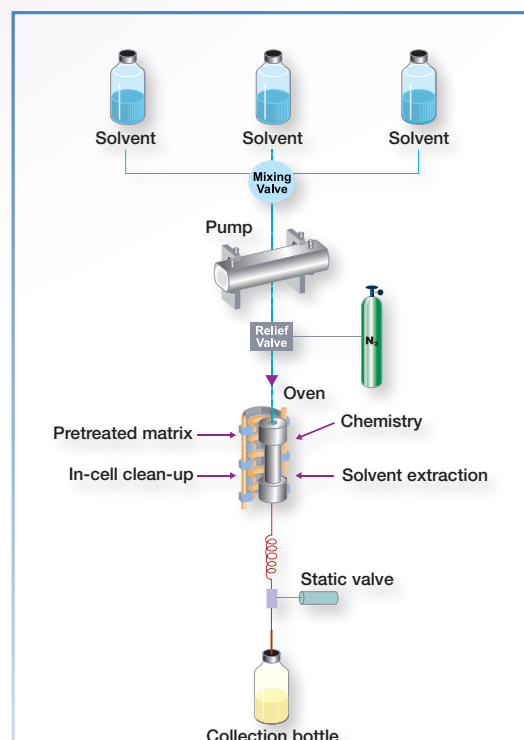
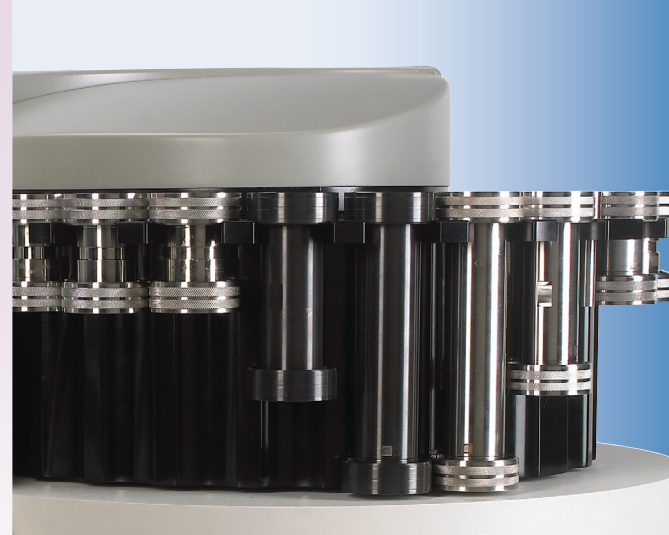
### The Dionex ASE 150/350 systems use patented technology that automatically performs solvent extractions

Extraction cells filled with sample are loaded into an oven where they are filled with solvent, heated, and pressurized. The cell is held at a preset temperature for a fixed period of time for a static extraction. A static valve is then opened to release the extract into the collection vessel and then is closed in preparation for a second static extraction. The number of static extraction cycles is programmable and once complete; the extraction cell is flushed and purged with nitrogen.



Through use of the static extraction cycles, the accelerated solvent extraction technique assures an exhaustive extraction in a manner that uses much less solvent and time. Since analytes diffuse out of the matrix and into the extraction solvent, static extraction cycles maximize the concentration gradient that permits this movement and results in highly efficient extractions. This results in high percent recoveries for analytes of interest in a diverse array of solid matrices with extraction times as low as 12 minutes per sample with a little as 5 mL of solvent used for each extraction.

The Dionex ASE 150/350 systems work with both stainless steel and Dionium extraction cells. Dionium cells permit the use of samples that require pretreatment with acids and bases and bring the benefits of the system to several new applications for food and renewable fuel source analysis.



Performance and productivity beyond traditional sample preparation techniques or procedures

Dionex ASE 150/350 systems deliver greater capabilities



Dionex ASE 150 system

**The Dionex ASE 150 is the entry-level ASE system designed for use in lower throughput labs. This system offers fast and efficient extraction for a large range of sample sizes.**

#### Key features include:

- Automated extraction for a single sample
- Small Footprint that requires less than 36 cm (14 in) of bench space
- Preprogrammed extraction methods to facilitate ease of use
- pH Hardened Pathways for acid and base pretreated samples

**The Dionex ASE 350 is designed for high-throughput labs with large sample testing requirements. It is ideal for the busy environmental, food analysis, chemical, pharmaceutical or research labs.**

#### Key features include:

- Unattended extraction of up to 24 samples
- Automated in-line solvent mixing for complex extractions
- Thermo Scientific™ Chromeleon™ 7 Chromatography Data System (CDS) software control for compliance and to simplify automation
- Collection vessels (60 mL) can be directly transferred to the Rocket Evaporator
- Stores 24 extraction methods and 24 extraction sequences for unmatched flexibility



Dionex ASE 350 system

- pH Hardened Pathways for acid and base pretreated samples

#### In-Cell Clean Up

The extraction cells used by both the Dionex ASE 150 system and Dionex ASE 350 system make use of several adsorbents that perform In-Cell clean up. Interfering compounds can be selectively removed through the addition of resins such as activated alumina and florisil. Use of these adsorbents may remove the need to offline gel permeation chromatography procedures. More detailed information can be found in Thermo Scientific Technical Note 210.





## Unmatched flexibility to meet your application needs

Analyte Class (EPA Analysis Method)	MDLa mg/kg	Accuracy (% Recovery of CRM)	Recovery as a % of Soxhlet	Precision (%RSD)
Organochlorine pesticides (8081) (average of 20 compounds)	0.5–3.2	66–84	75–105	3.2
PCBs (Aroclor 1254, 8082)	57–70	99	96.3	3.5
Total Petroleum Hydrocarbons (DRO, 8015)	5.1	104.1	NA	9.7
Organophosphorus Pesticides (8141) (average of 24 compounds)	18.9–171	56–72	90–111	16.3
Chlorinated Herbicides (8151) (average of 8 compounds)	22–261	36–69	101–118 <sup>c</sup>	15.5
Semivolatiles (BNAs, 8270) (average of 56 compounds)	16–89	58–70	66–120	5.4
Dioxins (8280/8290)	Low ppt	73 <sup>b</sup>	96 <sup>b</sup>	4.24 <sup>d</sup>

<sup>d</sup>Average RSD of Congeners

Extraction for Marker Compounds from Natural Products										
	Dianthrone (St. John's Wort)		Deacysaponins (Horse Chestnut)		Silybin (Milk Thistle)		Curcumin (Turmeric Rhizome)		Thymol (Thyme)	
Method	Soxhlet	*ASE Technique	Soxhlet & Reflux	*ASE Technique	Soxhlet	*ASE Technique	Reflux	*ASE Technique	Steam Distillation	*ASE Technique
Percent wt. (RSD%)	0.028 (7.1) <sup>a</sup>	0.035 (2.9)	2.6 (12)	3.7 (5.4)	1.13 (3.5)	1.16 (3.4)	0.89 (2.2)	1.06 (0.94)	1.15 (7.0)	1.17 (3.4)
Solvents	DCM Acetone	DCM MeOH	DCM MeOH	DCM MeOH	Petrol MeOH	Hexane MeOH	MeOH	MeOH	Water	Hexane DCM
Volume	250 mL	<50 mL	170 mL	<50 mL	200 mL	<70 mL	50 mL	<20 mL	250 mL	<80 mL
Total Time	38 h	<25 min	7 h	<40 min	9 h	<25 min	1 h	<30 min	2 h	<25 min

Total Extractables from Styrene-Butadiene Rubber (SBR)				
Sample	Target Value	*ASE Value (%)	*ASE RSD (n = 3)	*ASE Recovery (% vs. Target value)
1	32.59	32.66	0.52%	100.2
2	32.60	32.77	0.12%	100.5
3	33.86	33.89	0.56%	100.1
4	34.83	34.44	0.91%	98.9

Weight Percent of Each Plasticizer in Poly Vinyl Chloride (PVC)			
Plasticizer	*ASE Recovery (n=3)	Soxhlet Recovery (ASTM D2124) (n=2)	*ASE Recovery (% vs. Target value)
DOA	9.81	9.56	102.6
TOP	9.50	9.28	102.4
DOP	9.42	9.35	100.7
TOTM	9.17	9.05	101.3

Extraction of Additives from Low Density Polyethylene (LDPE)					
Procedure	Additive Concentration (ppm)				
	I-3114	I-1010	I-1330	I-168	I-1076
Chloroform dissolution	nd	95	599	659	205
*ASE Technique	nd	95	598	694	154

Extraction of Additives from High Density Polyethylene (HDPE)					
Procedure	Additive Concentration (ppm)				
	I-3114	I-1010	I-1330	I-168	I-1076
ASTM D-6953-11	353	132	nd	nd	240
*ASE Technique	335	138	nd	nd	281

7



# Total workflow solutions from Thermo Fisher Scientific

## Dionex ASE 150/350 Systems

Automated accelerated solvent extractor systems. Enables extraction of solid and semisolid samples using common solvents at elevated temperatures and pressures.



## Rocket Synergy 2 Evaporator

A revolutionary solvent evaporator that concentrates or dries up to 18 ASE vials or 6 large-volume flasks unattended.



## Thermo Scientific™ Dionex™ AutoTrace™ 280 Solid-Phase Extraction (SPE) Instrument

Automated SPE instrument that extracts large-volume samples (20 mL - 4 L) for the isolation of trace organics in aqueous matrices. Produces analyte recoveries that are superior to manual liquid-liquid extraction techniques using less time and solvent.



## Thermo Scientific™ TRACE™ 1300 Series GC Systems

The first and only gas chromatograph featuring user-exchangeable miniaturized, instant connect injectors and detectors that eliminate maintenance downtime and enable the user to quickly tailor instrument capability to specific applications and daily workload.



## Thermo Scientific™ TSQ™ 9000 Evo Triple Quadrupole GC-MS/MS System

A reliable, easy-to-use system that enables faster, more precise, error-free analyses, saving time and reducing laboratory costs. It enables more precise routine analyses and offers unstoppable productivity with uncompromised MS/MS simplicity.



## Thermo Scientific™ Vanquish™ HPLC and UHPLC Systems

Designed with innovative technology and attention to fine detail, Vanquish HPLC and UHPLC systems are the most advanced LC instruments available. The Vanquish systems improve performance and repeatability with no trade-offs in quality, robustness, or ease-of-use. Regardless of which Vanquish HPLC or UHPLC system is used, chromatographers have all they need to solve their toughest analytical challenges with confidence.



## Chromeleon CDS Software

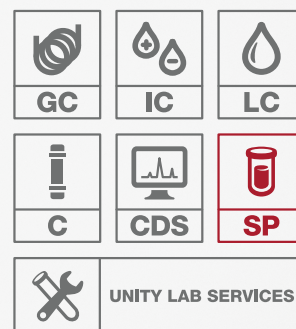
One scalable software platform for LC, GC, IC and MS that provides Operational Simplicity™ by streamlining your entire analysis process – ultimately boosting your lab's overall productivity, simplifying compliance and increasing the quality of your analytical results.



## The collective power of chromatography

### Lead your lab with SP

Impactful ion chromatography is about so much more than just the final result. It's about how you got there. How easy it was. How fast it was. And most importantly, it's about how much confidence you have in your result. For over 40 years, Thermo Fisher Scientific has been a leader of ion chromatography solutions perfecting these key attributes by developing instruments, chemistries and applications for your needs today and in the future. With the largest portfolio of IC solutions, we remain a steadfast and committed partner in your endeavor to improve the world around us.



Find out more at [thermofisher.com/chromatography](https://thermofisher.com/chromatography)